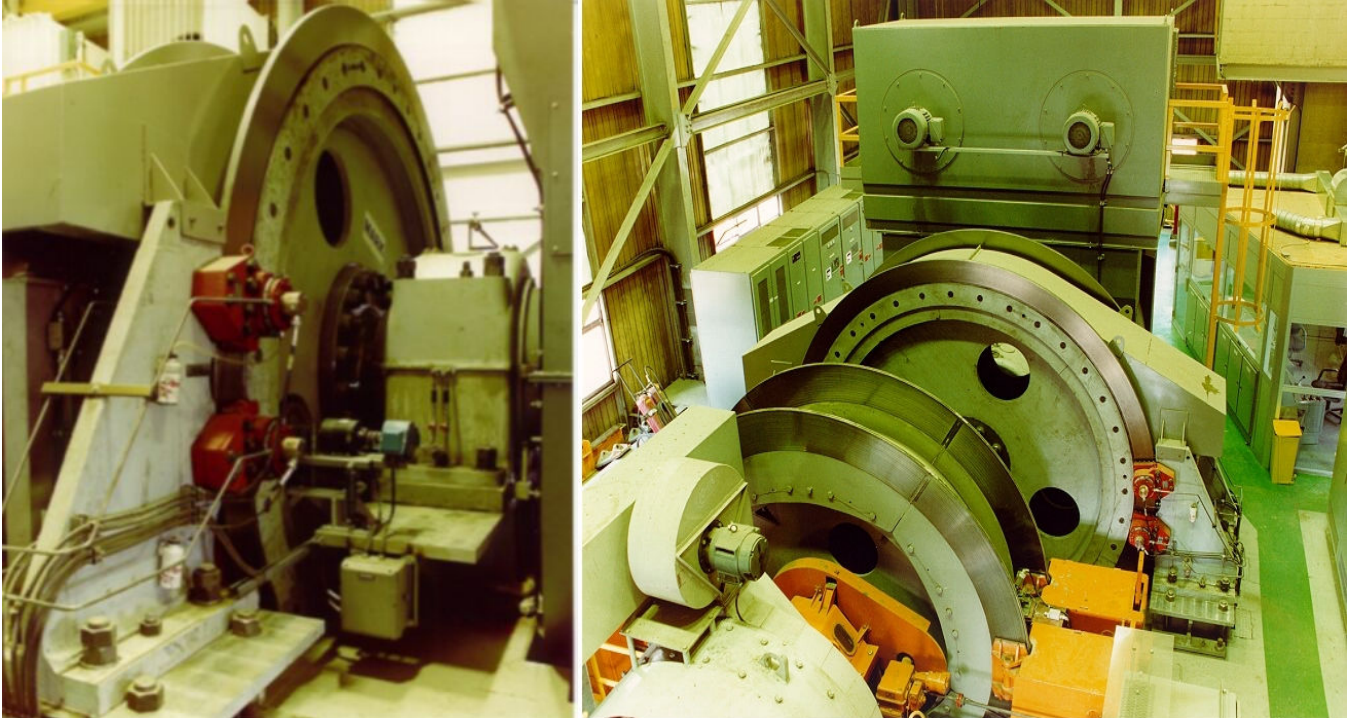


Coleman Mine, Sudbury, Canada



Customer: G E Canada
Location: Coleman Mine, Sudbury, Ontario, Canada
Year of Completion: 1990
Hoists supplied: 3 Rope Tower Mounted Friction Hoist

Technical Specification:

Drum Size: 154" Diameter
Electrics: GE 4000 hp Direct Drive DC Motor
Payload: 38,000lbs
Rope Speed: 2770 ft/min
Disc: Bolted in halves
Brakes: Svendborg 408 Units
Brake System: Markham Dual Line Regulated Braking
Bearings: 2 x Babbitt Bearings Pressure Lubrication
Groove Trimmer: 3 Tool System
Liners: Polyurethane
Remarks: Shared outboard Bearing Housing

| | | |
|--------------|--------------------|-------------------|
| Total | Engineering | Capability |
|--------------|--------------------|-------------------|

Last updated: 14.07.2010

DavyMarkham Limited, Prince of Wales Road, Darnall, Sheffield S9 4EX, United Kingdom
 tel: +44 (0) 114 244 9971 fax: +44 (0) 114 244 9641 www.davymarkham.com Registration No 5949781

